

NAVAL SAFETY COMMAND ASSURANCE

“FLEET-FACING AND ENABLING WARFIGHTING READINESS”

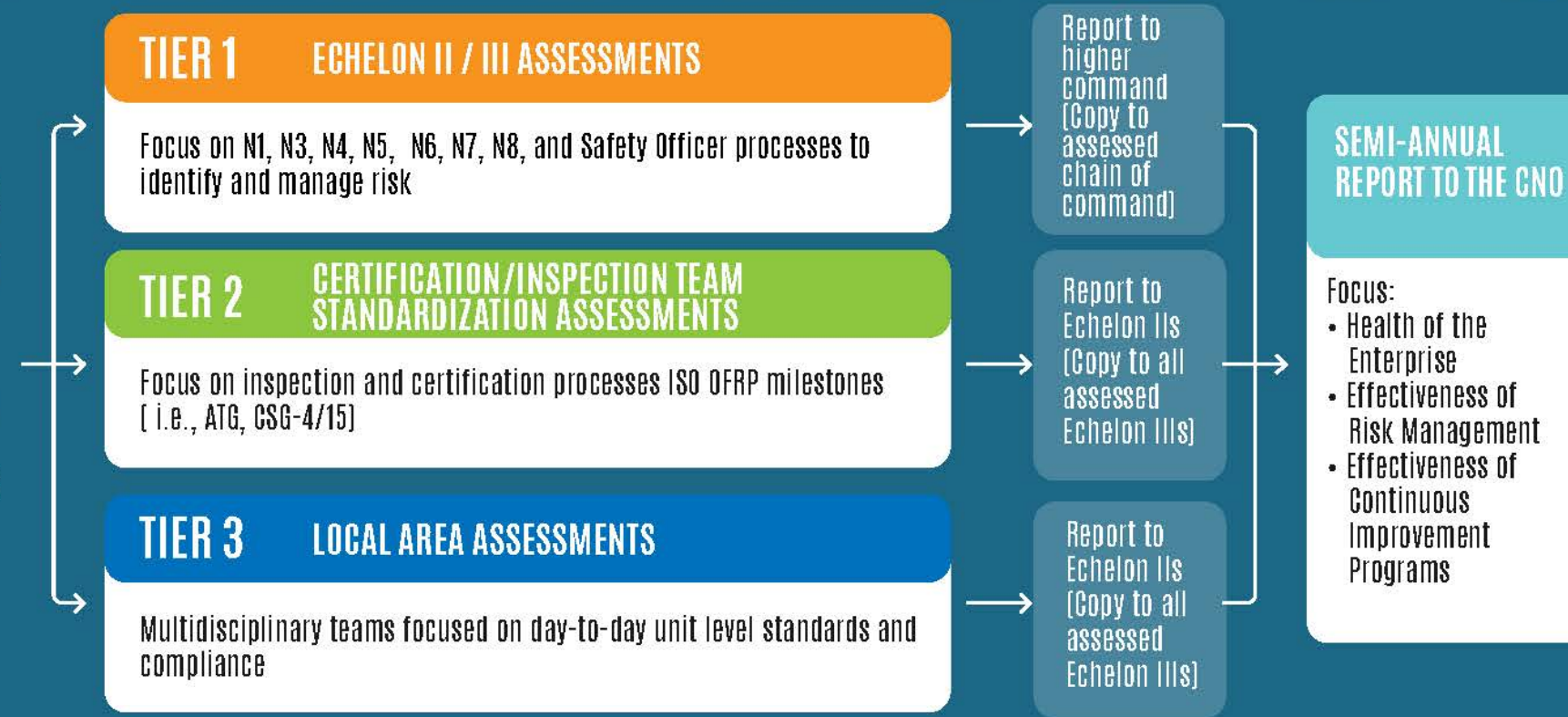


OUR ASSESSMENT MODEL

We are assessing behaviors of self-awareness, self-assessment, self-correction and continual learning in order to enable a defense-in-depth system that assures commands are **Safe to Operate** and **Operating Safely** through proper Risk Identification, Communication and Accountability at the appropriate level.

LEARNING TO ACTION BOARD (L2AB) ASSESSMENT PARTNER

- Assess completeness and efficacy of selected enterprise actions



SYSTEM OF SYSTEMS APPROACH

Enterprise-wide assessment of risk management and self-improvement practices. No longer focused solely on unit-level assessment.

Through NAVSAFECOM actions, leaders will better understand and control risk, and better develop teams that are self-aware, self-assessing, and self-correcting in an effort to engage in a principles-based approach to identify risk, communicate risk and take accountability/properly adjudicate for risk at the appropriate level.

ASSESSMENT EXAMPLES

ECHELONS 2/3:

Does their SMS comply with Echelon 1 SMS- and enterprise-specific legislation and policy?

ECHELONS 4/5:

Are the ISICs' and commanding officers' standing orders, command standard operating procedures (SOP) and safety programs compliant with higher guidance?

FY 2026 ASSESSMENT SCHEDULE

	OCT	NOV	DEC	JAN	FEB	MAR	APR	MAY	JUN	JUL	AUG	SEP
TIER I ASSESSMENTS (ECH II/III commands)				C4F C5F		NAVSPECWARCOM		IMEF (USMC)			C3F	C10F
TIER II ASSESSMENTS (Certification and Inspection Team standardization assessments)	Will resume FY-27											
TIER III ASSESSMENTS (Local Area assessments - ECH IV/V commands, facilities, bases, etc.)	Norfolk Oceana		Hawaii	NAS Corpus Christi/Kingsville	NS Rota/Sigonella Souda Bay Romania/Poland	Cherry Point	Mayport/JAX Fl. Kings Bay	Okinawa/Guam	San Diego Point Loma Coronado			PNW

LEGEND:

BLUE = PACFLT/USMC

RED = USFFC/USMC

BLACK = OTHER