



SCAFFOLDING SAFETY

Scaffolding must be equipped with planks, guardrails, toe boards, access and cross bracing. Otherwise, wear a full-body harness with energy absorbing lanyard (safety lanyard) attached to an anchorage. The harness will be inspected per the established PMS prior to use.

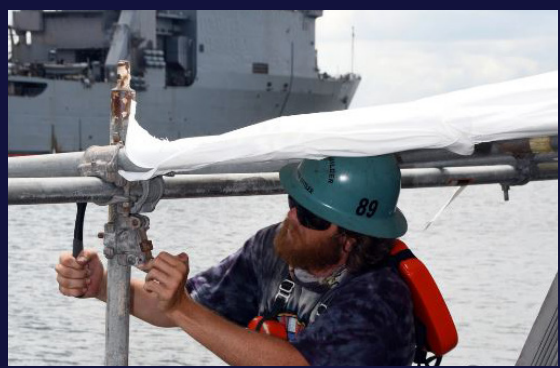
**B
L
U
F**

MISSING & INCOMPLETE INSPECTION TAGS ARE AN ELEVATED RISK TO FLEET

Naval Safety Command (NAVSAFECOM) discovered 29 instances of scaffolding structures rigged with incomplete or missing inspection tags during Local Area Assessments. Since 2014, there have been six recorded mishaps resulting in injury due to incorrect rigged or undocumented damage to scaffolding structures.

NAVSAFECOM has identified overall lack of adherence to fundamental policy, program structure and functional areas of responsibility.

Navy Safety and Occupational Health (SOH) Program Manual for Forces Afloat, OPNAVINST 5100.19F, Appendix B13-A Scaffolding instructs that daily inspections of scaffolding must be conducted by a qualified contractor or shipyard person. If ship's force is to use the scaffolding, then a ship representative must accompany the qualified contractor or shipyard personnel on the daily inspection before use.



SCAFFOLDING INSPECTION EVERY DAY IS THE STANDARD

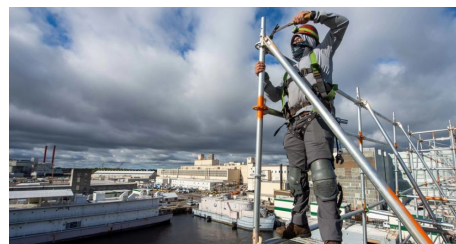
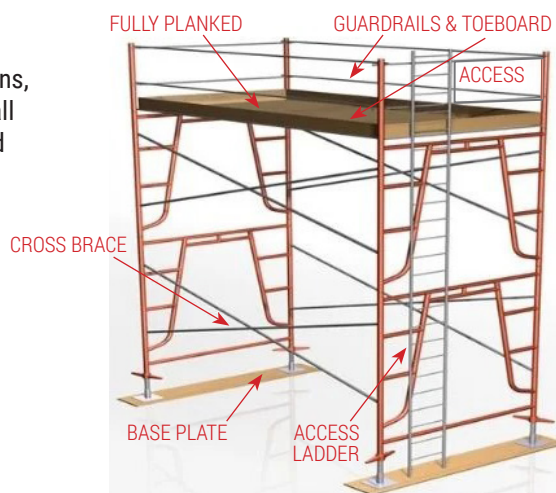
Scaffolding becomes a significant factor during either maintenance evolutions, or dry docking periods. It is imperative that the ship's safety organization, Fall Protection Program Manager and Competent Person are aware of all erected scaffolding, particularly those that will be used by ship's force personnel.

All scaffolding must be equipped with:

- Planks
- Guardrails and Toe-boards
- Access
- Cross bracing

NAVSAFECOM RECOMMENDS THE FOLLOWING ACTIONS:

1. Any personnel using rigged scaffolding of any type should be familiar with the requirements in OPNAVINST 5100.19F appendix B13-A.
2. Before entering scaffolding for use, ensure the structure has been inspected and initialed for the day's work on an inspection tag posted at the scaffolding access point.
3. Bring up any damage or incorrectly rigged scaffolding component immediately to the shipyard or ship's safety point of contact.



AFLOAT SAFETY, NAVAL SAFETY COMMAND - Keeping our sea warriors informed and ready



Afloat Office: (757) 444-3520, ext. 7831, DSN: 564-3520

NAVSAFECOM_CODE30_AFLOAT@navy.mil

Surface Office: (757) 444-3520, ext. 7831

NAVSAFECOM_CODE31_SURFACE@navy.mil

Submarine Office: (757) 444-3520, ext. 7833

NAVSAFECOM_CODE33_SUBMARINES@navy.mil